



# Funding Guide

Supported by players of



Awarded funds from



# Our funding focuses on the following themes:



Promoting **human rights**

Combatting **discrimination**

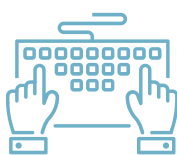
Preventing **poverty**

How much can your organisation apply for?		
Type of not-for-profit	£500 – £2,000	£500 – £20,000
Community Interest Companies with an asset lock	✓	
Constituted voluntary organisations with no charity number	✓	
Community benefit societies with an asset lock	✓	
Organisations with tax exempt status but no registered charity number	✓	
Registered charities, CIOs, SCIOs		✓



Applications are particularly welcomed from smaller charities and community groups, with preference given to charities with a turnover of under £1m. In addition, depending on the volume of high impact applications received, we may further prioritise smaller organisations, giving particular preference to those with a turnover of less than £500k.

We only fund constituted organisations that have a bank account in the name of the organisation with at least two unrelated signatories.



The application form appears on our website during the advertised dates. We can only accept applications through the online portal. Applicants may only submit one application to one trust supported by players of People's Postcode Lottery each round. Details on what is asked in the application can be found in the 'How to Apply' section of our website.

## What can your organisation apply for?

PROJECT FUNDING	or	CORE FUNDING
Projects are programmes of work which are limited in scope and seek to achieve particular outcomes		Core funding is for essential running costs including support costs, income generation and governance activities
Applicants may include running costs related to project delivery		Only for organisations funded in the last 3 years by People's Postcode Trust, Postcode Community Trust or Postcode Local Trust who have returned their evaluation form
The project should align with at least one of the trust's themes		The organisation's aims/objects should align with at least one of the trust's themes
Projects should be at least 2 weeks and no greater than 12 months in duration		12 months to spend the funds

## We do not fund:

Activities	Building renovations or refurbishment
	Activities taking place outside of GB or foreign travel
	Sponsorship
	Medical research, clinical treatment and equipment (e.g. defibrillators)
	Projects that promote religion
Organisation	Bodies seeking to distribute grants/funds to individuals or other organisations
	Individuals
	Local, regional or government institutions and organisations with core statutory responsibilities (e.g. NHS foundation trusts, parish councils, town councils and public bodies)
	Organisations currently in receipt of funding from players of the People's Postcode Lottery, including previous grant recipients who have not submitted a project evaluation form
	Organisations that appear to have excessive unrestricted or free reserves and no policy to reflect the rationale behind this
	Organisations that have previously breached their funding agreement with People's Postcode Trust
	Organisations with core support from players of People's Postcode Lottery through other <a href="#">Trusts</a> e.g. Wildlife Trusts, RDA, Girlguiding, Carers Trust, National Trust.
	Political parties or party-political activities
	Schools (except for special schools), parent teacher associations, nurseries, preschools, playgroups and universities/colleges
	Organisations outside of GB

Supported by players of



Awarded funds from

